

Indoor/Outdoor  
with Output  
contact

# SENSOR SPEAKER

Recording  
&  
Playback

PV-12 (Power: 12VDC with output contact)



*Sensor Speaker is designed to detect movement when the sensor detects people or cars, it switches on the announcement recorded in the internal speech synthesised LSI.*

**■ General Description**

Sensor Speaker is the product which combines a passive infrared sensor to detect the infrared (=body temperature) emitted from a human body or vehicles and trigger the speech synthesis LSI. Sensor Speaker is designed for wide applications such as an announcement speaker in various institutions or alarm/warning speaker at dangerous areas or construction sites.

Genuine speech synthesis device with PIR sensor.

It sends a message only when the built-in sensor detects people or cars. The horn speaker with max. 100dB/1m will be suitable for professional use.

**Easy recording and playback.**

Max. recording time: 8 sec. Simple recording by facing the microphone. Possible to record various messages any time, so applications are variable.

**Output contact convenient to trigger other systems.**

Dry contact relay equipped. Easy to connect to lights, chimes buzzer, and camera system, etc.

**Others**

- Sound volume adjustment.
- Memory back-up; max. 20 days record reserved after power off.
- Rain proof.

**■ For various applications:**



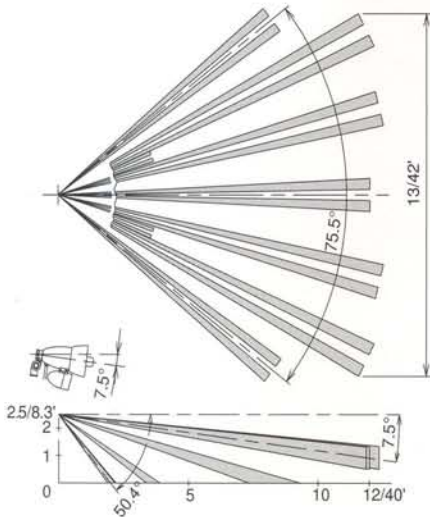
● Alarm/warning speaker at construction site



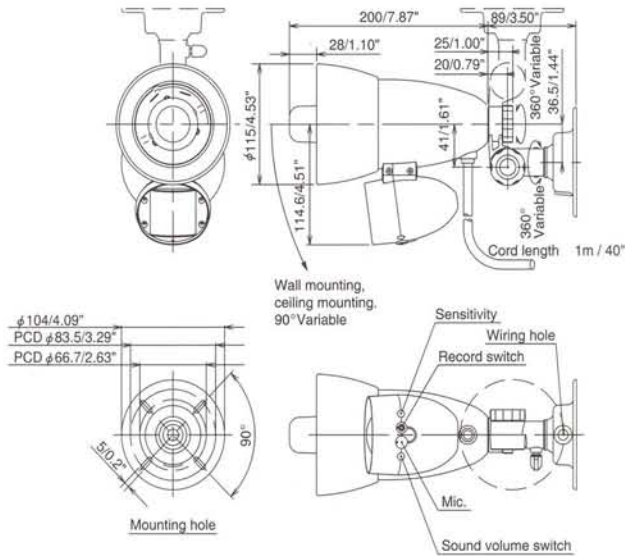
● Announcement speaker at houses

# SENSOR SPEAKER

## Coverage (m/feet)

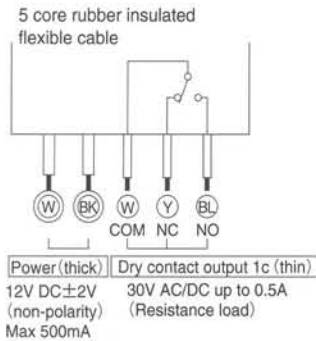


## External Dimensions (mm/inch)



## Wiring

(PV-12)



## Specifications

Model description		Sensor Speaker
Model Number		PV-12
Detection system		Passive infrared
Detection area		Wide angle max.12m(40')
Sensitive zone		24 lines(12 twins)
Sensitivity adjustment		Approx.20 - 180% variable
Supply power		12±2VDC(non-polarity)
Power Consumption	stand by	within 20mA
	operation	within 500mA(max. Vol.)
Detection output signal		Dry contact relay output Contact capa. : 30V AC/DC, 0.5A Output time : 8 sec.(playback time)
Warming-up time		Approx. 60 sec. (recordable only)
Speech synthesis method		ADM Method (speech LSI solid recording)
Recording method		Internal condenser mic.
Record/playback time		8 sec. (speech memory : 256kbits RAM)
Record memory backup time		More than 20 days under no electricity(Temp. -25°C (-13°F) battery charged more than 30 minutes.)
Sound output operation		One-shot playback(8 sec.)by input (detection signal) (No retrigger during play back)
Sound output		Max. 2W more than 100dB Subject to good recording.
Sound volume		Variable from zero to max.
Operation LED		(Recording) level indicator: good: flickering, small: lights on, big: off.  (Playback) Lights ON during playback time(8 sec.) Continuons input causes; continuons lighting during play back.
Ambient temperature		-20°C to +50°C (-4°F to +122°F)
Installation places		Indoor/outdoor(rain proof)
Wiring method		Lead wire (5 core) attached length: 1m(3.3')
Installation method		Screw on flange
Weight		1,050g(36.8oz) (including wire/100g(3.5oz))
External appearance		Black(PC resin)
Accessory		Installation flange, screws.

Note: This sensor speaker is designed to detect passing objects and to initiate a signal. It is not a burglar-preventing device. PULNiX is not responsible for damages or losses caused by accidents, thefts, Acts of God (including inductive lightning), abuses, misuses, abnormal usages, faulty installation or improper maintenance. Regular maintenance and inspection (at least annually) by the installer and frequent testing by the user are vital to continuous satisfactory operation of any alarm systems.

LEAF 05-02E5-7

# PULNiX

## In Japan

Takenaka Engineering Co., Ltd  
83-1, Gojo-sotokan,  
Higashino, Yamashina-ku,  
Kyoto 607-8156, Japan  
Tel : 81-75-501-6651  
Fax : 81-75-593-3816  
<http://www.takex-eng.co.jp/>

## In the U.S.

Pulnix Sensors Inc.  
230 E. Caribbean Drive  
Sunnyvale,  
CA 94089, U.S.A.  
Tel : 408-747-0100  
Fax : 408-734-1100  
<http://www.pulnixsensors.com/>

## In Australia

Pulnix Sensors Inc.  
Unit 16, 35 Garden Road,  
Clayton, Victoria 3168,  
Australia  
Tel : 03-9546-0533  
Fax : 03-9547-9450  
<http://www.pulnixsensors.com.au/>

## In the U.K.

Pulnix Europe Ltd.  
Pulnix House, Aviary Court,  
Wade Road, Basingstoke,  
Hampshire, RG24 8PE, U.K.  
Tel : 01256-475555  
Fax : 01256-466268  
<http://www.pulnix.co.uk/>