

SENSOR SWITCH

MS-15WE (Wide angle: for 15m)

MS-30NE (Long range: for 30m)



Sensor Switch is designed to detect the movement and sound. When the sensor detects people, car or sound, it switches on the light in the garden or garage.

■ GENERAL DESCRIPTION

Sensor Switch adopts a passive infrared sensor to detect the infrared (=body temperature) emitted from a human body and a sonic sensor to respond to sound waves. Sensor switch is designed for wide applications such as a switch to control illumination or home automation apparatus.

COMBINATION SENSOR

The unit is activated when either of PIR or sonic sensor is activated. The combination of PIR and sonic sensor enables various applications.

OPTIMAL USE FOR GARDEN LIGHT/GARAGE LIGHT

You can use sensor switch to turn ON/OFF the garden light for energy saving or to turn ON/OFF garage light with a sound of a car horn.

WEATHER PROOF

Rain proof construction enables outdoor/semi-outdoor installations. Ceiling mount, wall mount and pole mount are available, allowing most installations. The pitch of the mounting base fits flush mount boxes available on the market.

ADJUSTABLE OPERATION TIME

Operation time can be adjusted to either between approx. 2 sec and approx. 1 min. (variable) or between approx. 5 sec. and approx. 10 min. (variable).

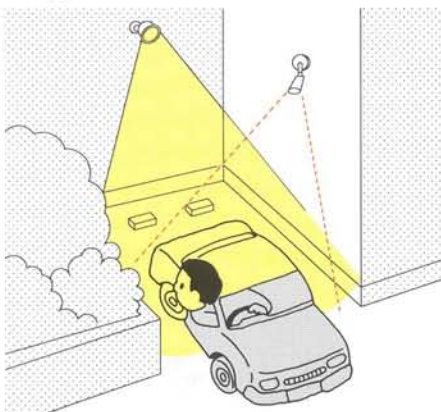
SIMPLE ANGLE ADJUSTMENT

New mechanism allows simple angle adjustment.

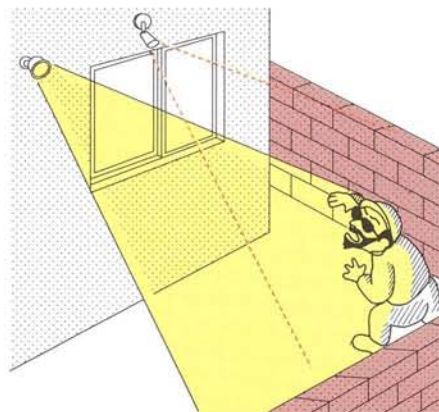
OTHERS

- For activating surveillance.
- Energy saving DAY/NIGHT discriminating function.
- Flashing function
- Operation LED (lights when the unit is activated.)
- Dry contact relay output 1c for wide application

■ Applications



- Easy parking even in dark garage. Light up with a sound of a car horn.



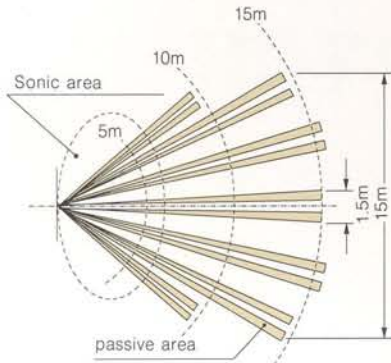
- Sudden lighting up has a warning effect.

SENSOR SWITCH

■ Coverage

(MS-15WE)

● Top view

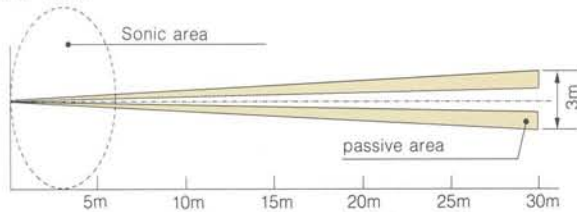


● Side view

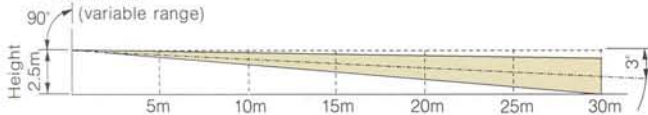


(MS-30NE)

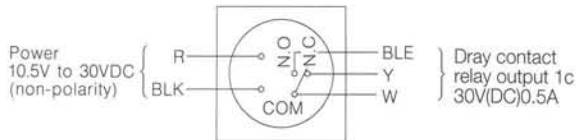
● Top view



● Side view



■ Terminal arrangement (MS-15WE,MS-30NE)

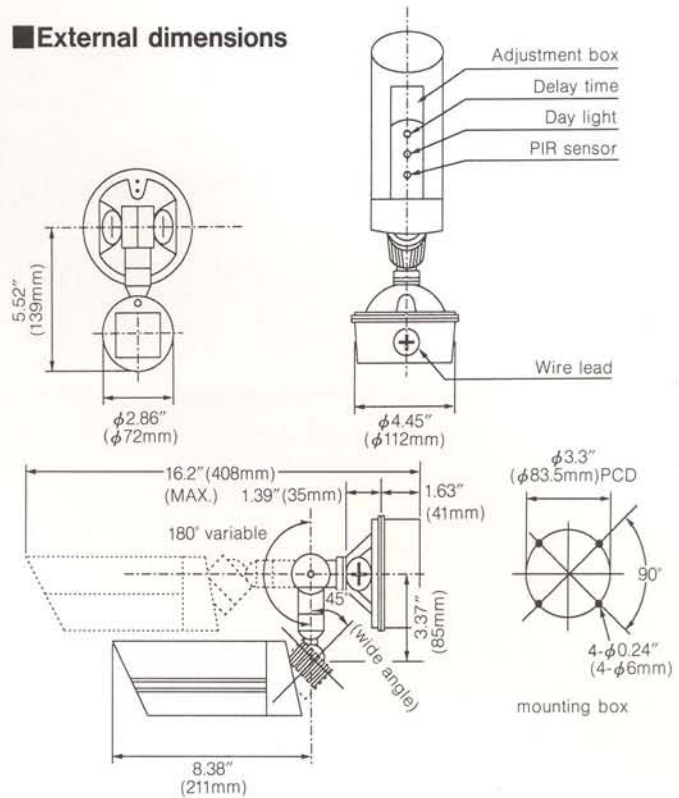


■ Optional

● Pole attachment (BP-01) ● Pole attachment (BP-02)



■ External dimensions



■ Specifications

Model	MS-15WE	MS-30NE
Detection system	Passive infrared(motion)+Sonic(sound)	
Coverage	Passive	Wide angle(Max.15m(50'))
	Sonic	Long range(Max.30m(100'))
Alarm output	Wide angle(Max.6m(20'))	
	Dry contact relay output :1c Contact capacity: 30V(DC)0.5A Max.(resistant load) Contact operation: Detection time + off delay (approx. 2sec. -approx. 1min.) (approx. 5sec. -approx. 10min.)	
Supply voltage	10.5VDC to 30VDC(non-polarity)	
Current consumption	30mA or less	
Ambient temperature range	-20°C to 50°C (-2°F to 122°F)	
Mounting position	Indoor / outdoor(Rain-proof)	
Connection	Lead wire	
Weight	500g(17.5oz)	
Appearance	Sensor: PC resin(ivory) Mounting portion: AES resin(dark gray)	

The specifications are subject to change without notice.
The unit is sensitive enough to detect an adult clapping hands within coverage.
Please note: The passive infrared sensor included in Sensor Switch is designed to detect infrared energy variation caused by the presence of a human body.
Therefore note that similar variation in conditions in the coverage, due to other reasons, may cause the sensor to create a signal as it is unable to distinguish between the sources.
Moving objects with heat source (wind, fallen leaves, small animals) may cause the passive infrared sensor to create a signal. Avoid using the unit for high security applications.

Please note: This sensor is designed to detect passing objects and to initiate a signal : it is not a burglary-preventing device. PULNiX is not responsible for damage or losses caused by accident, theft, Acts of God (including inductive lightning), abuse, misuse, abnormal usage, faulty installation or improper maintenance. Regular maintenance and inspection (at least annually) by the installer and frequent testing by the user are vital to continuous satisfactory operation of any alarm system.

LEAF 11-99E3-3

PULNiX

In Japan

Takenaka Engineering Co., Ltd
83-1, Gojo-sotokan,
Higashino, Yamashina-ku,
Kyoto 607-8156, Japan
Tel : 81-75-601-6651
Fax : 81-75-593-3816
<http://www.takex.co.jp/>

In the U.S.

Pulnix Sensors Inc.
1330 Orleans Drive
Sunnyvale,
CA 94089, U.S.A.
Tel : 408-747-0100
Fax : 408-734-1100
<http://www.pulnixsensors.com/>

In Australia

Pulnix Sensors Inc.
Unit 16, 35 Garden Road,
Clayton, Victoria 3168,
Australia
Tel : 03-9546-0533
Fax : 03-9547-9450
<http://www.pulnixsensors.com.au/>

In the U.K.

Pulnix Europe Ltd.
Pulnix House, Aviary Court,
Wade Road, Basingstoke,
Hampshire, RG24 8PE, U.K.
Tel : 01256-475555
Fax : 01256-466268

Pulnix Sensors Inc.
Brisbane office : 1/50 Logan
Road, Woolloongabba
Queensland
4102, Australia
Tel : 07-3891-3344
Fax : 07-3891-3355